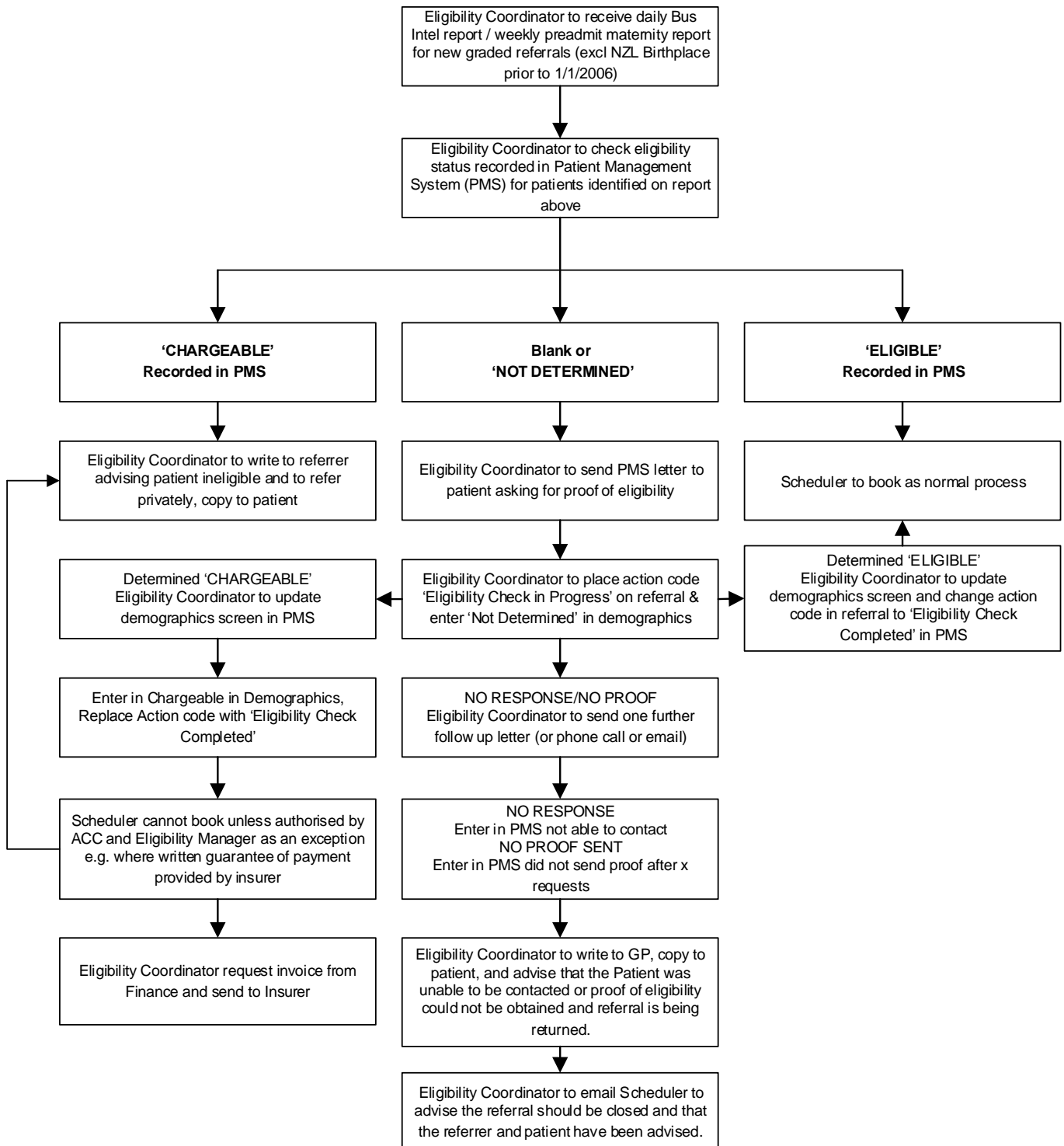


**STANDARD**

To ensure that consistent process is utilised by Bay of Plenty District Health Board (BOPDHB) for charging non-eligible NZ residents with bookings in Outpatients, Elective and Maternity Waitlists.



 <p><b>BAY OF PLENTY</b> DISTRICT HEALTH BOARD HAUORA A TOI</p>	<p align="center"><b>NON-NZ RESIDENTS – OUTPATIENTS, ELECTIVE AND MATERNITY WAITLIST CHARGING PROCESS</b></p>	<p align="center"><b>Policy 3.2.3 Protocol 3</b></p>
<p><b>NON-NZ RESIDENTS – CHARGING PROTOCOL</b></p>		

**ASSOCIATED DOCUMENTS**

- Bay of Plenty District Health Board policy 3.2.3 Non-New Zealand Residents – Charging for Services Delivered by BOPDHB
- Bay of Plenty District Health Board policy 3.2.3 Protocol 0 Non-New Zealand Residents - Charging Standards
- Bay of Plenty District Health Board policy 3.2.3 protocol 1 Non-New Zealand Residents – Roles & Responsibilities
- Bay of Plenty District Health Board policy 3.2.3 protocol 4 Non-New Zealand Residents – ED to Discharge / Inpatients Charging Process
- Bay of Plenty District Health Board policy 3.2.6 protocol 2 Financial Management – Accounts Receivable - Receipt Of BOPDHB Monies Guideline
- Bay of Plenty District Health Board policy 6.4.1 protocol 10 Patient Transfer – International Repatriation Standards
- Bay of Plenty District Health Board policy 1.3.1 Complaints Management
- Bay of Plenty District Health Board Schedule of Fees for Patients (Excluding Maternity Services) Who Are Not Eligible for Publicly Funded Healthcare in NZ (8128) – *viewable only. Order through Design & Print Centre*
- Bay of Plenty District Health Board Schedule of Fees for Patients Receiving Maternity Services Who Are Not Eligible for Publicly Funded Healthcare in NZ (8126) – *viewable only. Order through Design & Print Centre*
- Bay of Plenty District Health Board Charges for patients who are ineligible for publicly funded healthcare in NZ brochure – *viewable only. Order through Design & Print Centre*
- Bay of Plenty District Health Board Maternity related charges for women ineligible for publicly funded healthcare in NZ brochure – *viewable only. Order through Design & Print Centre*

<p>Issue Date: Jul 2016 Review Date: Jul 2019</p>	<p>Page 2 of 2 Version No: 4</p>	<p>NOTE: The electronic version of this document is the most current. Any printed copy cannot be assumed to be the current version.</p>
<p>Protocol Steward: ACC Non Resident Eligibility &amp; Private Patient Manager</p>	<p>Authorised by: Chief Operating Officer</p>	