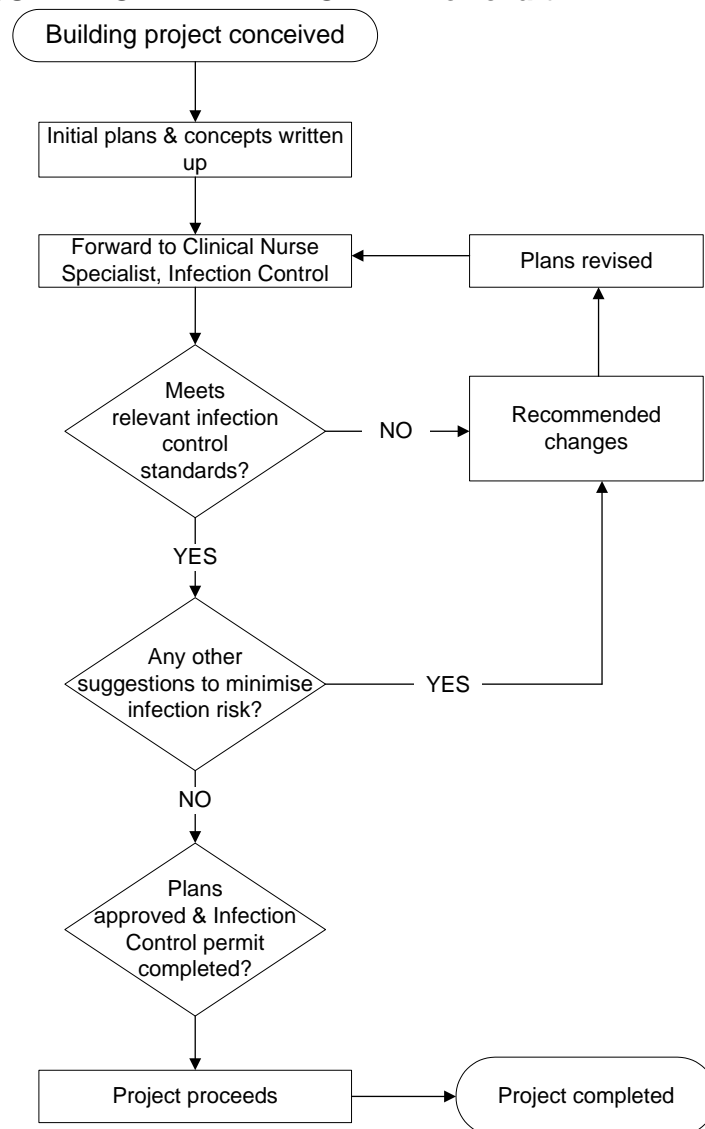


STANDARD

Minimise infection risk by ensuring that infection control input has been sought for construction / maintenance activities, that appropriate infection control standards will be met, and that the Clinical Nurse Specialist, Infection Control has issued a compliance permit on behalf of the Infection Control Committee.

Building and work flow design considerations can have an impact on infection risk significantly. In many cases very minor layout changes will minimise this risk at little or no additional cost. It is therefore important that Infection Control advice is sought early in the process.

PLANNING CONSULTATION AND APPROVAL- Flowchart



Issue Date: Mar 2016	Page 1 of 2	NOTE: The electronic version of this document is the most current. Any printed copy cannot be assumed to be the current version.
Review Date: Mar 2019	Version No: 3	
Protocol Steward: Infection Control Physician	Authorised by: GM Property Services	

 <p>BAY OF PLENTY DISTRICT HEALTH BOARD HAUORA A TOI</p>	<p align="center">BUILDING CONSTRUCTION – PLANNING, INFECTION CONTROL, CONSULTATION & APPROVAL</p>	<p align="center">Policy 5.1.12 Protocol 1</p>
<p align="center">BUILDING CONSTRUCTION PROTOCOL</p>		

ASSOCIATED DOCUMENTS

- Bay of Plenty District Health Board policy 5.1.12 Building Construction / Renovations / Maintenance – Infection Control Requirements
- Bay of Plenty District Health Board policy 5.1.12 protocol 0 Building Construction / Renovations / Maintenance – Infection Control Requirements – Standards
- Bay of Plenty District Health Board policy 5.1.12 protocol 1 Building Construction - Planning, Consultation & Approval
- Bay of Plenty District Health Board policy 5.1.12 protocol 2 Building Construction and Renovations – Cultural Safety Standards
- Bay of Plenty District Health Board policy 5.4.10 Work Safety Systems
- Bay of Plenty District Health Board Building Construction – Infection Control Permit form

<p>Issue Date: Mar 2016 Review Date: Mar 2019</p>	<p>Page 2 of 2 Version No: 3</p>	<p>NOTE: The electronic version of this document is the most current. Any printed copy cannot be assumed to be the current version.</p>
<p>Protocol Steward: Infection Control Physician</p>	<p>Authorised by: GM Property Services</p>	